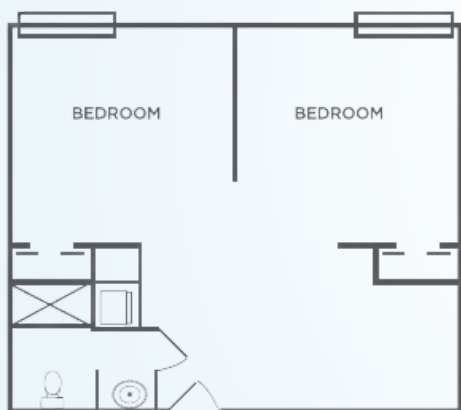


Engaged living, a tranquil setting, and compassionate care are hallmarks of Sodalis Windcrest of San Antonio, a community that encourages an active lifestyle and daily activities for residents, both on campus and throughout the beautiful San Antonio area. With designer touches throughout, you'll enjoy a spacious apartment home and a list of amenities, knowing that you have a full range of personalized care available.

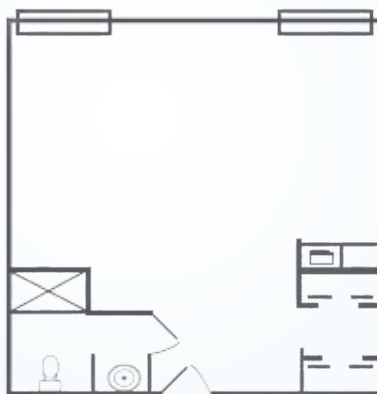
## ASSISTED LIVING FLOOR PLANS

### TWO BEDROOM



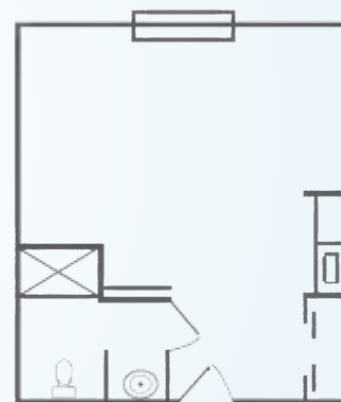
Two Bedrooms | Living Room  
Kitchenette | Bath  
Starts at \$5,700\* / month  
435 square feet

### STUDIO DELUXE



Bedroom | Living Room  
Kitchenette | Bath  
Starts at \$3,650\* / month  
335 square feet

### STUDIO



Bedroom | Living Room  
Kitchenette | Bath  
Starts at \$3,400\* / month  
270 square feet

## ADDITIONAL FEES

- Community Fee: \$2,000 (one-time, non-refundable)
- Companion Fee - Two Bedroom: \$3,100 (plus Care Fee)
- Companion Fee: \$2,900 (plus Care Fee)
- Second Person Fee: \$1,000 (plus Care Fee)
- Respite Rate: \$225 / day
- Non-House Pharmacy Fee: \$175 / month
- Pet Fee\*\*/Scooter Fee: \$500 (one-time)

\* For residents who require assistance beyond our basic services, Sodalis Windcrest of San Antonio uses a needs assessment tool to determine a resident's level of care upon admission. Level of Care is not included in monthly rates. Rates are subject to change.

\*\* Small approved pets are allowed provided the resident can care for it and it is contained on a leash when out of their apartment.