



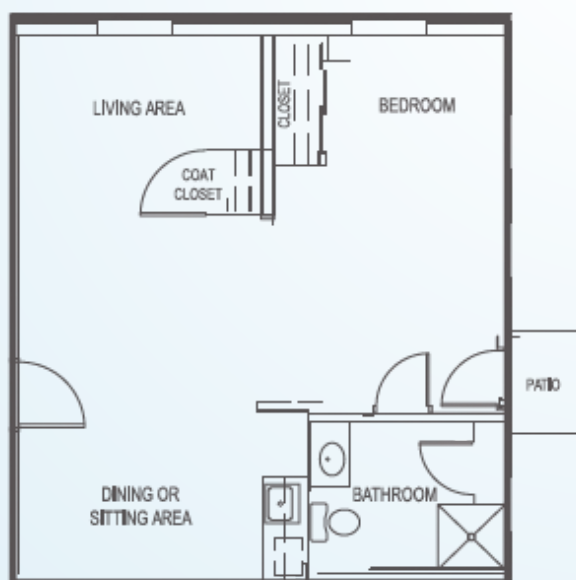
Engaged living, a tranquil setting, and compassionate care are hallmarks of Sodalis Wharton, a community that encourages an active lifestyle and daily activities for residents, both on campus and throughout the beautiful Wharton area. With designer touches throughout, you'll enjoy a spacious apartment home and a list of amenities, knowing that you have a full range of personalized care available.

With our "residents first" philosophy, our team embraces a proactive approach to the health and wellness of our residents, making our community distinctly capable of providing the highest levels of care, delivered with the warmth and hospitality of a family member. We have thought of everything to make our community your perfect new home.



## ASSISTED LIVING FLOOR PLANS

### ONE BEDROOM DELUXE



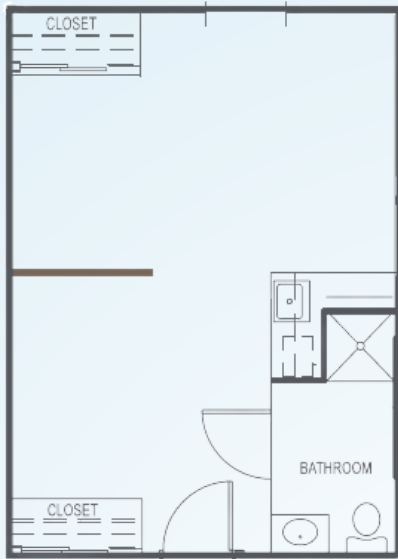
One Bedroom | Living Room  
Kitchenette | Bath  
Starts at \$3,600\* / month  
400 square feet

### ONE BEDROOM



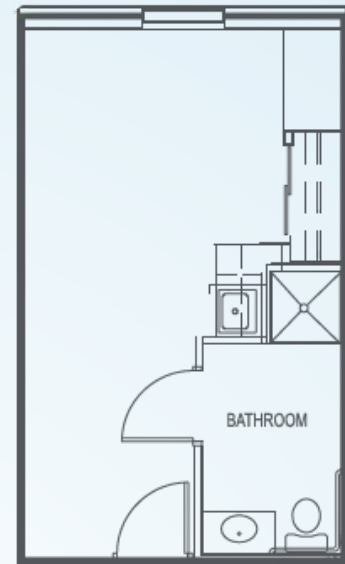
One Bedroom | Living Room  
Kitchenette | Bath  
Starts at \$3,400\* / month  
300 square feet

## STUDIO DELUXE



Bedroom/Living Room  
Kitchenette | Bath  
Starts at \$3,300\* / month  
350 square feet

## STUDIO



Bedroom/Living Area  
Kitchenette | Bath  
Starts at \$3,000\* / month  
300 square feet

## ADDITIONAL FEES

- Community Fee: \$2,000 (one-time, non-refundable)
- Companion Fee - One Bedroom: \$2,800 (plus Care Fee)
- Companion Fee - Studio: \$2,600 (plus Care Fee)
- Second Person Fee: \$1,000 (plus Care Fee)
- Respite Rate: \$225 / day
- Non-House Pharmacy Fee: \$175 / month
- Pet Fee\*\*/Scooter Fee: \$500 (one-time)

\* For residents who require assistance beyond our basic services, Sodalis Wharton uses a needs assessment tool to determine a resident's level of care upon admission. Level of Care is not included in monthly rates. Rates are subject to change.

\*\* Small approved pets are allowed provided the resident can care for it and it is contained on a leash when out of their apartment.

