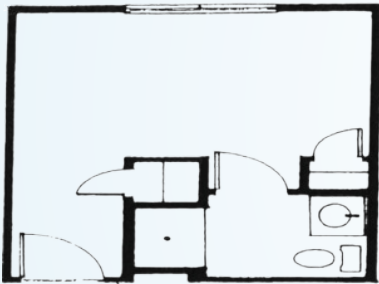


The Memory Care team embraces a proactive approach to resident health and wellness, delivering the highest levels of care with the warmth and hospitality of family. The team has specialized training to optimize quality of life through everyday activities in a meaningful way. For caregivers needing extra help during the day or while on vacation, Sodalis Vero Beach offers respite stays, if rooms are available.

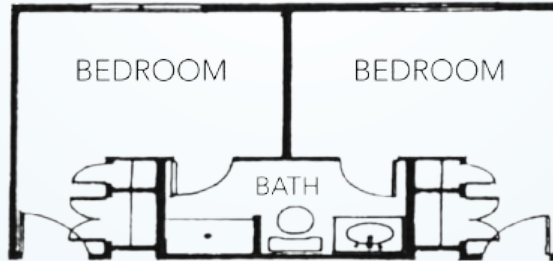
MEMORY CARE FLOOR PLANS

PRIVATE SUITE



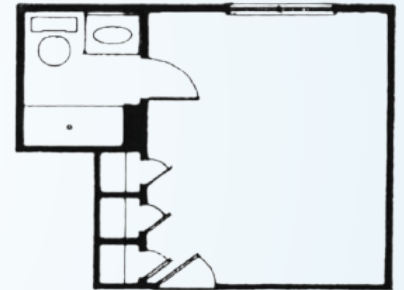
Private Bedroom
Private Bathroom
Starts at \$4,400* / month

PRIVATE/SHARED SUITE



Private Bedroom
Shared Bathroom
Starts at \$4,100* / month

SEMI-PRIVATE SUITE



Shared Bedroom
Shared Bathroom
Starts at \$3,200* / month

ADDITIONAL FEES

- Companion Fee: \$3,200 (plus Care Fee)
- Respite Rate: \$299 / day
- Community Fee: \$1,000 (one-time, non-refundable)
- Non-House Pharmacy Fee: \$175 / month
- Scooter Fee: \$500 (one time)

* For residents who require assistance beyond our basic services, Sodalis Vero Beach uses a needs assessment tool to determine a resident's level of care upon admission. Level of care is not included in monthly rent rates. Rates are subject to change.