

ASSISTED LIVING FLOOR PLANS

Engaged living, a tranquil setting, and compassionate care are hallmarks of Sodalis Texas City, an assisted living community that encourages an active lifestyle and daily activities for residents, both on campus and throughout the beautiful Texas City area. With designer touches throughout, you'll enjoy a spacious apartment home and a list of amenities, knowing that you have a full range of personalized care available.

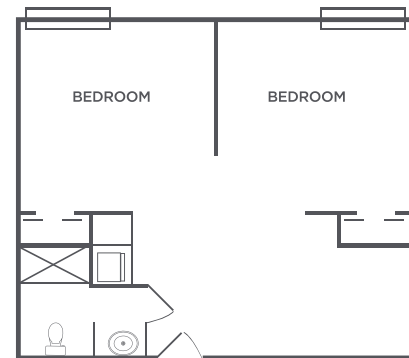
Our chef will provide you with three delicious meals and snacks daily. With our "residents first" philosophy, our team embraces a proactive approach to the health and wellness of our residents, making our community distinctly capable of providing the highest levels of care, delivered with the warmth and hospitality of a family member. We have thought of everything to make our community your perfect new home.

TWO BEDROOM

Living Room | 2 Bedrooms | Kitchenette | Bath

Rates start at \$5,600* / month

435 square feet

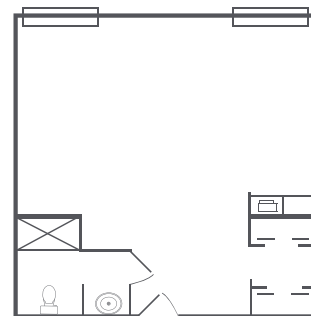


DELUXE STUDIO

Bedroom | Living Room | Kitchenette | Bath

Rates start at \$3,200* / month

335 square feet



**ADDITIONAL FEES:
ADDITIONAL FEES:**

- Levels of Care*:
 - Level 1: \$400 / month
 - Level 2: \$600 / month
 - Level 3: \$800 / month
 - Level 4: \$1,000 / month
 - Level 5: \$1,200 / month
- Bridges Level of Care: \$1,000 - \$1,200
- Second Person Fee: \$1,000 (*plus Care Fee*)
- Companion Fee: \$2,800 (*plus Care Fee*)
- Respite Rate: \$150 / day
- Community Fee (one time, non-refundable): \$2,000
- Non-House Pharmacy Fee: \$175 / month
- Pet Fee** / Scooter Fee: \$250

Rates subject to change.

* For residents who require assistance beyond our basic services, Sodalis Texas City uses a needs assessment tool to determine a resident's level of care upon admission.

** *Small approved pets are allowed provided the resident can care for it and it is contained on a leash when out of their apartment.*

STUDIO

Bedroom / Living Room | Kitchenette | Bath

Rates start at \$2,999* / month

270 square feet

