



## FLOOR PLANS

Engaged living, a tranquil setting, and compassionate care are hallmarks of Sodalis Milton, a community that encourages an active lifestyle and daily activities for residents, both on campus and throughout the beautiful Milton area. With designer touches throughout, you'll enjoy a spacious apartment home and a list of amenities, knowing that you have a full range of personalized care available.

### ADDITIONAL FEES:

- Levels of Care\*:
  - Level 1: \$400 / month
  - Level 2: \$600 / month
  - Level 3: \$800 / month
  - Level 4: \$1,000 / month
  - Level 5: \$1,200 / month
- Companion Fee: \$2,600
- Respite Rate: \$150 / day
- Community Fee (one time, non-refundable): \$2,000
- Non-House Pharmacy Fee: \$175 / month
- Pet Fee\*\* / Scooter Fee: \$250

Rates subject to change.

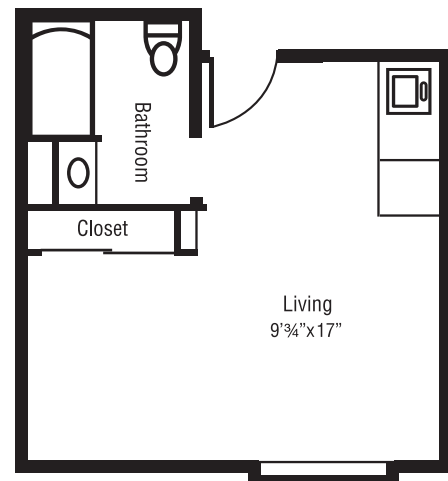
\* For residents who require assistance beyond our basic services, Sodalis Milton uses a needs assessment tool to determine a resident's level of care upon admission.

\*\* Small approved pets are allowed provided the resident can care for it and it is contained on a leash when out of their apartment.

### STUDIO

Living Area | Kitchenette | Bath

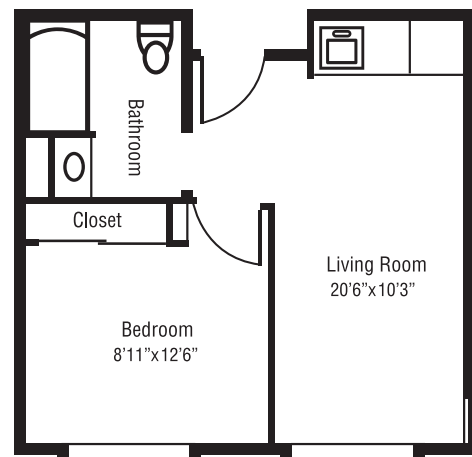
All-inclusive rate starts at \$2,900\* / month  
320 square feet



### ONE BEDROOM

Living Room | Bedroom | Kitchenette | Bath

All-inclusive rate starts at \$3,900\* / month  
430 square feet



5887 Berryhill Road | Milton, FL 32570 | 850.626.9901

[www.SodalisMilton.com](http://www.SodalisMilton.com)

ALF #9549