

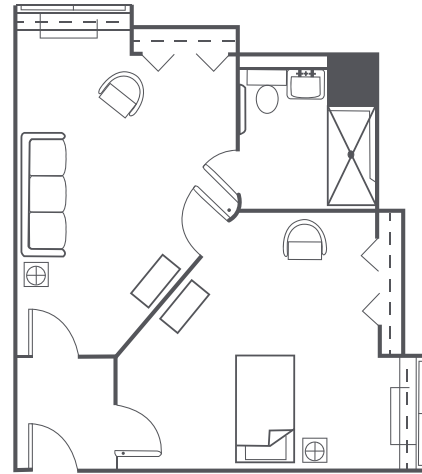
ASSISTED LIVING FLOOR PLANS

Engaged living, a tranquil setting, and compassionate care are hallmarks of Sodalis Pensacola, an assisted living community that encourages an active lifestyle and daily activities for residents, both on campus and throughout the beautiful Pensacola area. With designer touches throughout, you'll enjoy a spacious apartment home and a list of amenities, knowing that you have a full range of personalized care available.

Our chef will provide you with three delicious meals and snacks daily. With our "residents first" philosophy, our team embraces a proactive approach to the health and wellness of our residents, making our community distinctly capable of providing the highest levels of care, delivered with the warmth and hospitality of a family member. We have thought of everything to make our community your perfect new home.

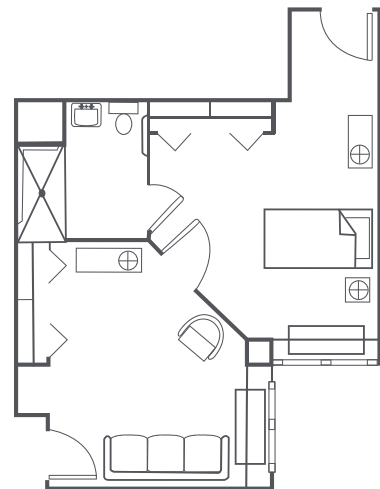
DELUXE ONE BEDROOM

Living Room | 1 Bedroom | Bath Rates
start at \$4,000* / month
662 square feet



ONE BEDROOM

Bedroom | Living Room | Bath
Rates start at \$3,800* / month
503 square feet



ADDITIONAL FEES:

- Levels of Care*:
 - Level 1: \$575 / month
 - Level 2: \$875 / month
 - Level 3: \$1,075 / month
 - Level 4: \$1,275 / month
 - Level 5: \$1,475 / month
- Bridges Level of Care: \$1,000 - \$1,200
- Second Person Fee: \$1,000 (plus Care Fee)
- Companion Fee-Studio: \$2,400 (plus Care Fee)
- Respite Rate: \$150 / day
- Community Fee (one time, non-refundable): \$2,000
- Non-House Pharmacy Fee: \$175 / month
- Pet Fee** / Scooter Fee: \$500

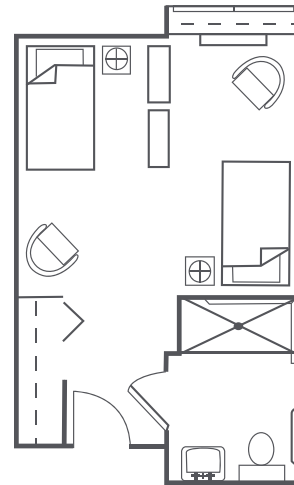
Rates subject to change.

* For residents who require assistance beyond our basic services, Sodalis Pensacola uses a needs assessment tool to determine a resident's level of care upon admission.

** Small approved pets are allowed provided the resident can care for it and it is contained on a leash when out of their apartment.

DELUXE STUDIO

Bedroom / Living Room | Bath
Rates start at \$3,200* / month
330 square feet



STUDIO

Bedroom / Living Room | Bath
Rates start at \$3,100* / month
300 square feet

