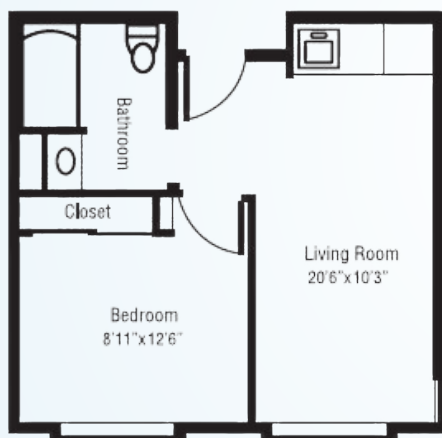




Engaged living, a tranquil setting, and compassionate care are hallmarks of Sodalis Milton, a community that encourages an active lifestyle and daily activities for residents, both on campus and throughout the beautiful Milton area. With designer touches throughout, you'll enjoy a spacious apartment home and a list of amenities, knowing that you have a full range of personalized care available.

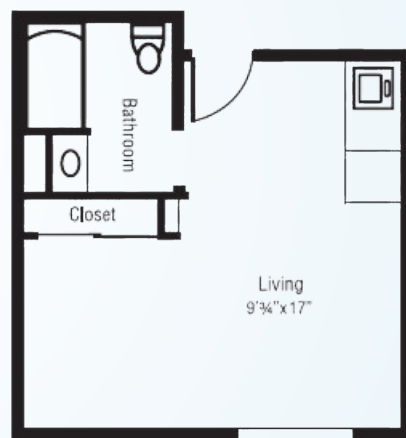
## ASSISTED LIVING FLOOR PLANS

### ONE BEDROOM



Living Room | Bedroom  
Kitchenette | Bath  
Starts at \$4,100\* / month  
430 square feet

### STUDIO



Living Area  
Kitchenette | Bath  
Starts at \$3,100\* / month  
320 square feet

## ADDITIONAL FEES

- Community Fee: \$2,000 (one-time, non-refundable)
- Companion Fee: \$2,600 (plus Care Fee)
- Second Person Fee: \$1,000 (plus Care Fee)
- Respite Rate: \$225 / day
- Non-House Pharmacy Fee: \$175 / month
- Pet Fee\*\*/Scooter Fee: \$500 (one-time)

\* For residents who require assistance beyond our basic services, Sodalis Milton uses a needs assessment tool to determine a resident's level of care upon admission. Level of Care is not included in monthly rates. Rates are subject to change.

\*\* Small approved pets are allowed provided the resident can care for it and it is contained on a leash when out of their apartment.