

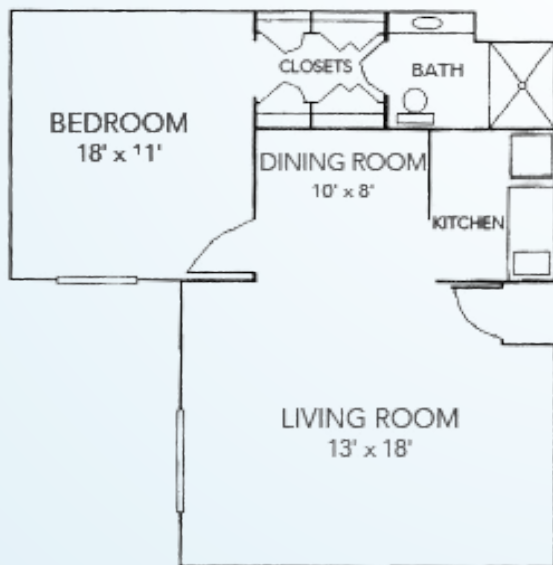
Engaged living, a tranquil setting, and compassionate care are hallmarks of Sodalis Merritt Island, a community that encourages an active lifestyle and daily activities for residents, both on campus and throughout the beautiful Merritt Island area. With designer touches throughout, you'll enjoy a spacious apartment home and a list of amenities, knowing that you have a full range of personalized care available.

With our "residents first" philosophy, our team embraces a proactive approach to the health and wellness of our residents, making our community distinctly capable of providing the highest levels of care, delivered with the warmth and hospitality of a family member. We have thought of everything to make our community your perfect new home.



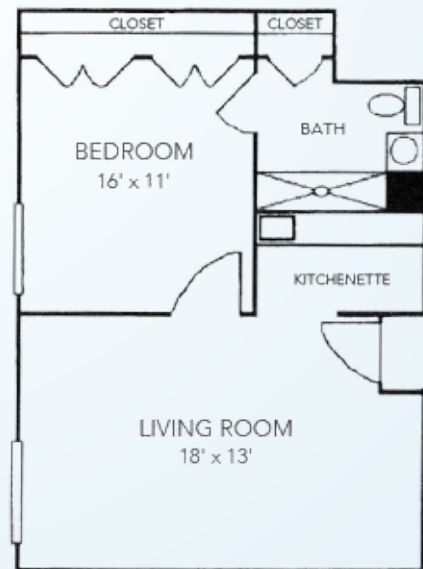
ASSISTED LIVING FLOOR PLANS

ONE BEDROOM DELUXE



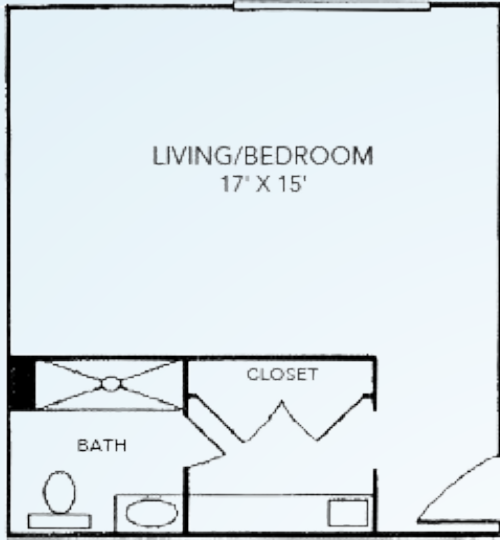
One Bedroom | Living Room
Kitchenette | Bath
Starts at \$4,999* / month
741 square feet

ONE BEDROOM



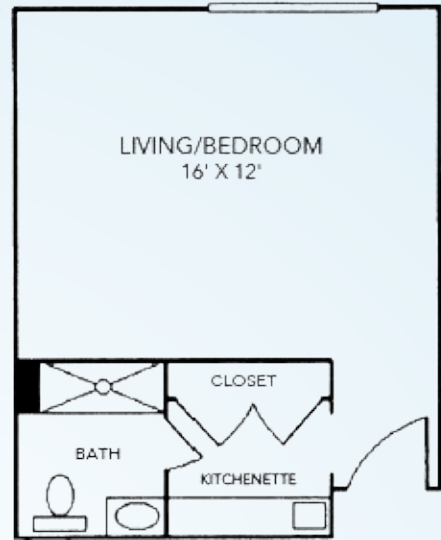
One Bedroom | Living Room
Kitchenette | Bath
Starts at \$4,600* / month
528 square feet

STUDIO DELUXE



Bedroom/Living Room
Kitchenette | Bath
Starts at \$4,000* / month
370 square feet

STUDIO



Bedroom/Living Area
Kitchenette | Bath
Starts at \$3,300* / month
327 square feet

ADDITIONAL FEES

- Community Fee: \$1,000 (one-time, non-refundable)
- Companion Fee - One Bedroom: \$3,300 (plus Care Fee)
- Companion Fee - Studio: \$2,800 (plus Care Fee)
- Second Person Fee: \$1,000 (plus Care Fee)
- Respite Rate: \$225 / day
- Non-House Pharmacy Fee: \$175 / month
- Pet Fee**/Scooter Fee: \$500 (one-time)

* For residents who require assistance beyond our basic services, Sodalis Merritt Island uses a needs assessment tool to determine a resident's level of care upon admission. Level of Care is not included in monthly rates. Rates are subject to change.

** Small approved pets are allowed provided the resident can care for it and it is contained on a leash when out of their apartment.

