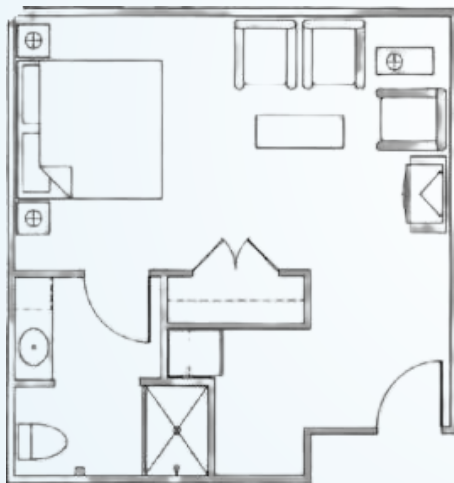


The Memory Care team embraces a proactive approach to resident health and wellness, delivering the highest levels of care with the warmth and hospitality of family. The team has specialized training to optimize quality of life through everyday activities in a meaningful way. For caregivers needing extra help during the day or while on vacation, Sodalis Martinez offers respite stays, if rooms are available.

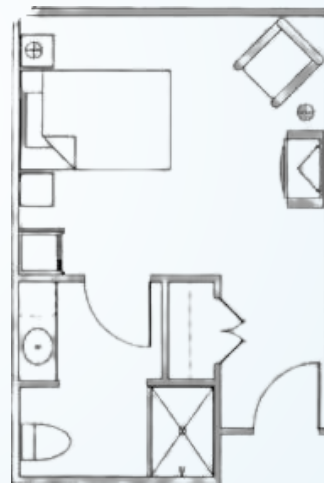
MEMORY CARE FLOOR PLANS

DELUXE STUDIO



Bedroom/Living Room | Bath
Rates start at \$5,300*/month
390 square feet

STUDIO



Bedroom/Living Room | Bath
Rates start at \$4,600*/month
270 square feet

ADDITIONAL FEES

- Companion Fee: \$4,600 (plus Care Fee)
- Respite Rate: \$299 / day
- Community Fee: \$2,000 (one-time, non-refundable)
- Non-House Pharmacy Fee: \$175 / month
- Scooter Fee: \$500 (one-time)

* For residents who require assistance beyond our basic services, Sodalis Martinez uses a needs assessment tool to determine a resident's level of care upon admission. Level of care is not included in monthly rent rates. Rates are subject to change.