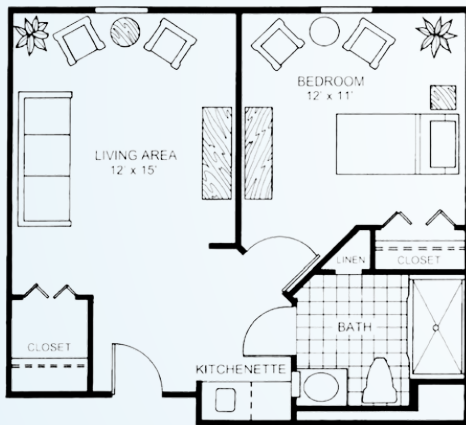


The Memory Care team embraces a proactive approach to resident health and wellness, delivering the highest levels of care with the warmth and hospitality of family. The team has specialized training to optimize quality of life through everyday activities in a meaningful way. For caregivers needing extra help during the day or while on vacation, Sodalis Largo offers respite stays, if rooms are available.

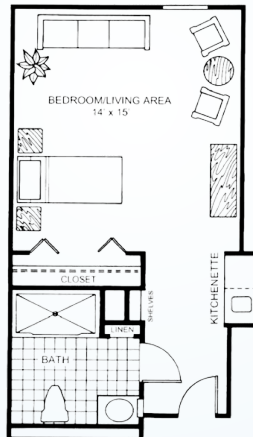
MEMORY CARE FLOOR PLANS

ONE BEDROOM



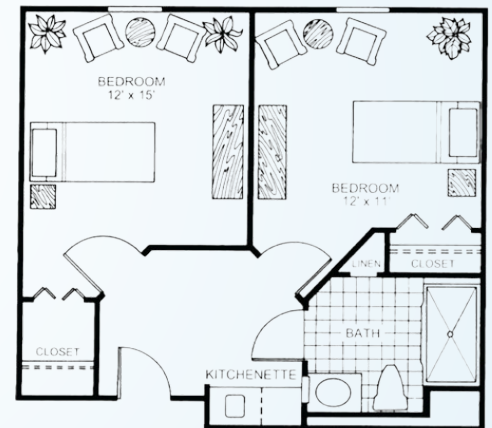
Living Room | Bedroom
Kitchenette | Bath
Starts at \$5,700* / month
509 square feet

STUDIO



Bedroom / Living Room
Kitchenette | Bath
Starts at \$5,300* / month
404 square feet

COMPANION ROOM



2 Bedroom
Kitchenette | 1 Bath
Starts at \$4,200* / month
509 square feet

ADDITIONAL FEES

- Companion Fee: \$3,875 (plus Care Fee)
- Respite Rate: \$299 / day
- Community Fee: \$1,800 (one-time, non-refundable)
- Non-House Pharmacy Fee: \$175 / month

* For residents who require assistance beyond our basic services, Sodalis Largo uses a needs assessment tool to determine a resident's level of care upon admission. Level of care is not included in monthly rent rates. Rates are subject to change.