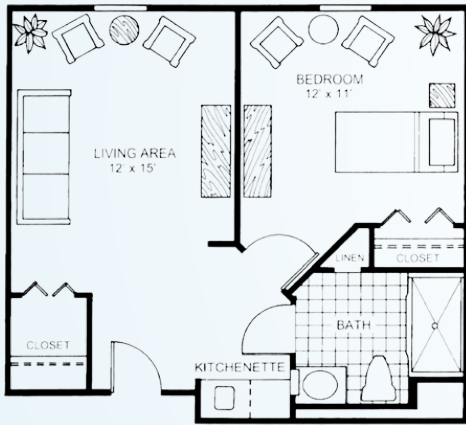


Engaged living, a tranquil setting, and compassionate care are hallmarks of Sodalis Largo, a community that encourages an active lifestyle and daily activities for residents, both on campus and throughout the beautiful Largo area. With designer touches throughout, you'll enjoy a spacious apartment home and a list of amenities, knowing that you have a full range of personalized care available.



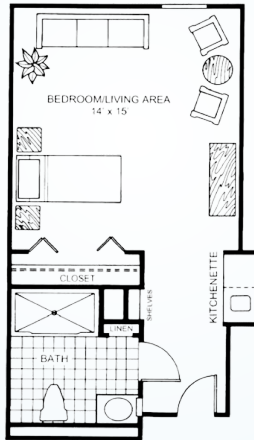
ASSISTED LIVING FLOOR PLANS

ONE BEDROOM



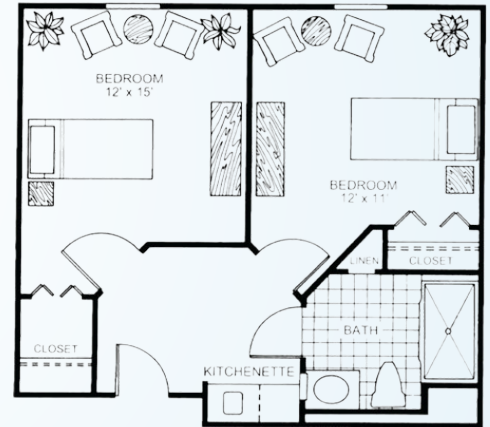
Living Room | Bedroom
Kitchenette | Bath
Starts at \$4,500* / month
509 square feet

STUDIO



Bedroom / Living Room
Kitchenette | Bath
Starts at \$4,000* / month
404 square feet

COMPANION ROOM



2 Bedroom
Kitchenette | 1 Bath
Starts at \$3,000* / month
509 square feet

ADDITIONAL FEES

- Community Fee: \$1,800 (one-time, non-refundable)
- Companion Fee - One Bedroom: \$2,900 (plus Care Fee)
- Companion Fee - Studio: \$2,500 (plus Care Fee)
- Second Person Fee: \$1,000 (plus Care Fee)
- Respite Rate: \$225 / day
- Non-House Pharmacy Fee: \$175 / month
- Pet Fee**/Scooter Fee: \$500 (one-time)

* For residents who require assistance beyond our basic services, Sodalis Largo uses a needs assessment tool to determine a resident's level of care upon admission. Level of Care is not included in monthly rates. Rates are subject to change.

** Small approved pets are allowed provided the resident can care for it and it is contained on a leash when out of their apartment.